



HOTPIT Autofest Autofest 2026 Tech, Rules and Regulations

Tech Rules

ALLOWED CHASSIS:

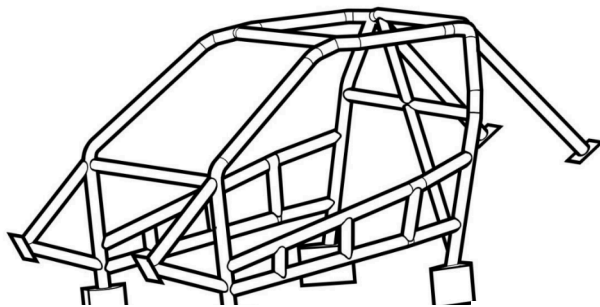
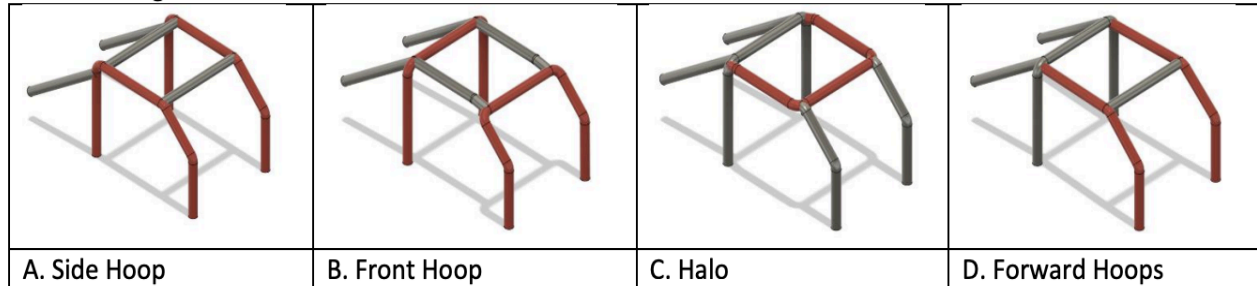
- Formula Drift - Pro Chassis: **Allowed**
- Formula Drift - ProSpec Chassis: **Allowed**
- Custom Tube Chassis: **Allowed under previous inspection 2400 lbs minimum**
- RHD >< LHD Converted Vehicles: **Allowed**
- AWD Vehicles: **Not Allowed**
- Exo Skeleton Death Karts: **Not Allowed**
- EV (Electric Vehicles): **Not Allowed**
- **Tire Size:** 265 Maximum width. (Based on sidewall tire print)
- **Treadwear:**
 - FRONT: **Open**
 - REAR: **Spec tire**
- **Front Steering:** Angle Kit **Allowed** (open modification)
- **Rear:** Grip Kit **Allowed** (open modification)
- **Subframe:** Modified Pickups **Allowed**
- **Transmission:** Swap, Dogbox, Sequential **Allowed**

SAFETY

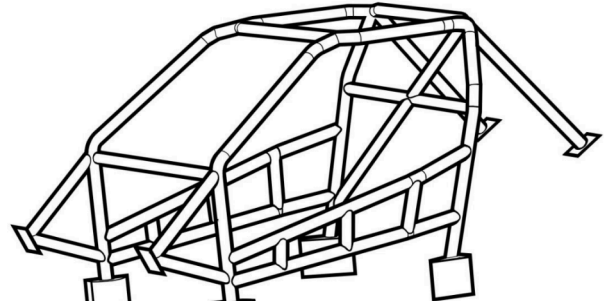
CHASSIS SAFETY:

Rollcage: 6 Point Welded Cage w/ Door Bars. 1.5-inch tube, .095 Wall Thickness DOM minimum. Anti-Wheel Intrusion Bars are HIGHLY recommended.

Several configurations are allowed:



RIGHT HAND DRIVE CONFIGURATION



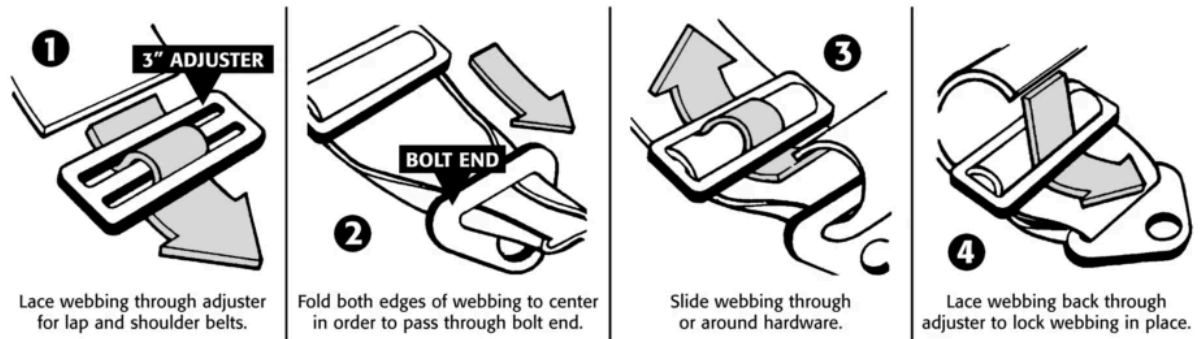
LEFT HAND DRIVE CONFIGURATION

Cutoff Switch:

- 1 Internal - at driver's reach on the A-pillar
- or
- 1 External - Twist killswitch, push button or pull cord on front driver side of chassis
- External switch must have Kill / Off Decal within 10" of unit

Seat: Halo Seat required for 2026 Bucket Seat (FIA/ SFI). The seat must look clean with no visible tears. Must be securely fastened. Halo Seat required for 2026

Seatbelt: Minimum 5 Point Harness Properly Mounted. Minimum 10mm $\frac{3}{8}$ " mounting bolt size.



Fire Safety: 1x 5 lb Extinguisher Minimum Mounted Inside Car. Fire Suppression System recommended

Fuel: OEM Tank Allowed. Fuel Cell Allowed behind firewall. Fuel cell or stock tank located in the rear of the car must be protected. **Must have some a Roll over check valve**

Firewall: Fuel Cell, Rear Mount Radiators or any tanks that may hold any liquids need to be **BEHIND** a Firewall. Nitrous Bottle may remain in front of the firewall if desired. Firewall must be sealed and secured. No open holes in the firewall.

Roll Cage Padding: SFI padding must be present anywhere the driver's helmet can touch.

Transmission tunnel: Tunnel must be sealed. Modifications allowed given a minimum thickness of .036-inch steel or .050-inch aluminum / or equivalent securely attached to the chassis

Drive Shaft Loop: Required for 2026

Exterior:

- Vehicles **MUST** have all body panels present at the beginning of race day
- At the start of Top 32, all vehicles **MUST** be outfitted with all secured body parts
- Vehicles **MUST** have at least one working tail light and Brake Light at all times.
- Vehicles **MUST** be presentable at the beginning of each race day. Vehicles with multiple colored body panels unless otherwise designed as a Livery may require further approval
- Windshield **must** be crack free the day of. It may continue to race if it develops a crack within 10" of length.
- Vehicles **must** have functioning door handles on both interior and exterior or accessible from both
- All lug nuts **must** be present and torqued

Interior:

- Seat and Mounts **MUST** be rigid and securely mounted
- Seat belts **MUST** be installed the correct way
- Vehicle **MUST** have secured dash
- Vehicle **MUST** have kill switch within reach of driver
- Vehicle **MUST** have functioning door handles

***** EACH DRIVER MUST HAVE AT LEAST 1 x 10 lbs OR 2 x 5 lbs FIRE EXTINGUISHERS IN THEIR PIT AREA. FAILURE TO NOT EQUIP PIT AREA WITH FIRE EXTINGUISHER MAY RESULT IN A \$200 FINE.**

Driver:

DRIVING SUIT: One-piece driving suits are required and must be made of fire-resistant material and certified to SFI spec 3.2/A/5 or greater, or homologated to FIA 8856-2000, 8856-2018 specs, which effectively covers the body, including neck, ankles, and wrists. Multi-layer driving suits are recommended. Articles must be free of holes, tears or other openings except those made by the manufacturer of the equipment. Fire-resistant underwear is recommended. **All drivers and teams must carry a HOTPIT Autofest series Logo on the uppermost chest of the driver's suit and team uniform.** Other official series sponsor patches may be required. Contact the HOTPIT Autofest representative to obtain the digital file or patch.

Helmet: 1. Snell Memorial Foundation – SA2015, SA2020 2. SFI Foundation – Spec 31.2A 3. FIA 8860-2010, 8859-2015, 8860-2018 Full-faced helmets are required.

Neck Resistant: **A type of HANS Device is required.**

Shoes: Shoes, are required and must be fire-resistant material and certified to SFI spec 3.3/5 or greater, or FIA 8856-2000, 8856-2018 specs

Gloves: Gloves are required and must be fire-resistant material and certified to SFI spec 3.3/5 or greater, or FIA 8856-2000, 8856-2018 specs

Underwear / Socks: Fire retardant underwear/socks are highly recommended

Head Sock: SFI Head Sock Required

ARM RESTRAINTS: Arm restraints are highly recommended

Thermal Protective Performance Chart

SFI Rating	TPP Value	Time to 2nd Degree Burn	Typical Use
3.2A/1	TPP 6	3 Seconds	Single-Layer Suit
3.2A/3	TPP 14	7 Seconds	Double-Layer Suit
3.2A/5	TPP 19	10 Seconds	Double-Layer Suit
3.2A/10	TPP 38	19 Seconds	Land Speed Records
3.2A/15	TPP 60	30 Seconds	Top Fuel/Alcohol
3.2A/20	TPP 80	40 Seconds	Top Fuel/Alcohol Funny Car

QUALIFYING FORMAT 2026:

QUALIFYING FORMAT:

- Drivers will complete 1 solo qualifying run.

The top 24 drivers will be automatically seated for TOP 32.

The remaining 16 (25-40) drivers will battle for the remaining TOP 32 spots, in the "DEATH MATCH" battles.

- If a driver scores an incomplete, they will still acquire points based on their run up to the point of incompleteness. For example, a driver can accumulate 90 points throughout the run and then spin just before the finish line.

This will give them 90 points on their incomplete run (Example score 90/0). In this example, the 90 points will be used to set the qualifying order for all other competitors who also scored a zero/incomplete on their run (90/0 qualifies higher than 70/0).

However, runs scored with an incomplete can never out-qualify a completed run. (Example, a completed run with score of 50 qualifies higher than an uncompleted run with a score of 90/0).

- If a driver is not ready for their qualifying lap, they will be deducted 10 points and allowed to qualify last, so the highest possible score would be 90 pts.

QUALIFYING CRITERIA AND SCORING:

- Three Judges all scoring only their specific criteria separately. All 3 scores are added together to give the final score for the qualifying run.
- Point System: (Subject to change per round)
- 1 judge for Line (40 pts)
- 1 judge for Angle (30 pts)
- 1 judge for Style (30 pts)
- = 100 possible points
- POINT DEDUCTIONS WILL BE MADE FOR THE FOLLOWING:
 - Bobbles
 - Wall taps that disrupt vehicle
 - 1, 2 or 3 tires off course
 - Missing zones and clips
 - Straightening
 - Off line
 - Lack of Angle
 - * Late initiation

QUALIFYING TIE BREAKER

In the event of a tie in qualifying, on Run One the following chart will be implemented.

- Tie Breaker 1 Style Score.
- Tie Breaker 2 Angle Score.
- Tie Breaker 3 Line Score.
- Tie Breaker 4 Previous round or season ranking.

INCOMPLETE QUALIFYING RUNS

If a driver makes any of the following mistakes in a qualifying run, the driver will be scored with an INCOMPLETE. Judges reserve the right to add additional INCOMPLETEs for specific tracks, which would be outlined in the driver's meeting. - - -

- Spinning Out
- Opposite drift - Drifting with the opposite angle required at that point on the course.
- A mix of multiple mistakes that could be classified as an Unchaseable Lead.
- Straightening out for a period of time deemed excessive by the judges.
- 4 tires off course
- Mechanical breakdowns and/or crashes that prevent the completion of the course.

Tandem Battles Rules

-Tandem battles will follow traditional Tandem Criteria, with each driver doing one lead run and one chase run. Higher qualifier leads first.

- For tandem battles, the judges will no longer judge separate criteria, like qualifying. Instead all 3 judges will watch the entirety of both the lead and follow runs to determine the winner based on the best overall performance.

- **Decel Zones:** Decel zones will be laid out in the driver's meeting. Designated decel zones can be used by judges to determine fault in collisions or to make an overall performance judgement.
- **Contact:** The Chase driver is typically at fault for contacting the lead driver. But the judges will use available resources like live stream replays to determine if the lead driver was at fault for the collision.
- **Tire De-bead:** In the event of a de-bead both drivers will be allowed to change their rear tires or re-inflate their tires.
 - **Incomplete runs:** There are no hard zero scores in tandem battles except for full spins, 4 tires off course or crashes/mechanical failures. All other Mistakes will be accounted for by the judges and the winner will be selected based on who did the better job or the lesser of two evils. Judges submit their choice of winner anonymously and the winner is revealed after all 3 votes are submitted to race control.

EXAMPLES OF CHOOSING WINNER WHEN THERE'S TRADITIONALLY A DOUBLE ZERO:

-Exp 1: Lead Driver has a late initiation or short understeer, which would not be as bad as the Chase Driver spinning out or wrecking (DNF)

-Exp 2: Chase Driver has a late initiation, short understeer or a need to re-initiate is not as bad as the Lead Driver spinning out or going off course.

- Exp 3: If both drivers incomplete as outlined in the "incomplete runs" section, the judges reserve the right to choose a winner based on the lesser of two evils. Although 4 tires off is an incomplete, it is not as bad as crashing and not being able to continue the battle.

- In these 3 examples above, you would have traditionally had a forced OMT because of double zeros. We want to eliminate that, so judging these runs (mistakes) allows us to move forward with the competition.

Unchasable Lead:

-EXP: Bad or late initiation, going 4 tires off, spinning out, shutting down, multiple mistakes, hitting the wall. Judges will decide if the run was Unchaseable.

SCORE DEDUCTIONS WILL BE MADE FOR THE FOLLOWING:

- Bobbles
- Wall Taps that disrupt vehicle
- Tire off-course

- Missing zones and clips
- Straightening
- Off Line
- Lack of Angle
 - Excessive slowing or loss of proper momentum in the lead run.
 - Contact and bumping caused by the chase driver when the lead driver is using proper speed and momentum.

“ONE MORE TIME (OMT)” RULES:

- NO OMT allowed in death match battles. OMT is allowed from top 32 on.
- If 2 judges choose OMT and 1 judge selects a driver as the winner, this does not result in an OMT battle. Instead, that is considered a tie-breaker and the win will go to the driver that was chosen by the third judge.
- If all 3 judges choose OMT then the battle will go one more time.
- If all 3 judges have a truly split decision (example Driver A / OMT / Driver B) then the battle will go one more time.
- There is a maximum of 1 OMT allowed per battle. This will help prevent excessive wear and use of consumables, as well as speed up the run of show for fans. After the 1st OMT battle, the judges must select a winner.

Trackside Hot Pit is (MANDATORY for top 16 at OSS)

- To keep the competition flowing smoothly, the Top 16 drivers will be required to have to set up their hot pits trackside.
- All 5-minute calls will be taken in the trackside Hot Pit area during the Top 16

Tire Warm Up

- If the driver is not to the line in 30 seconds, mandatory red flag and loss of lap (applied during practice only)
- The time limit is based on the time when both drivers enter the track

Allowed Tire Rules

2026, all full-season HOTPIT drivers will be required to run the following tire on the rear of the car: **Zestino Acrova 07A (340TW) Tire —255/35/18 or 265/35/18 (Rear Tires Only)**

This tire will be mandatory for all competition runs at **all of the** HOTPIT Autofest events, including qualifying and competition battles.

Front tires will remain open and drivers may run any brand or model front tire of their choice.

Approved Exceptions:

1. Pro Guest Drivers (Single-Event Entries)

Pro guest drivers competing in one (1) HOTPIT round only may run the rear tire brand they are currently sponsored by, provided:

- The tire is of equivalent traction and performance level
- Final approval is granted by HOTPIT officials and tech **inspectors.**

This allows HOTPIT to host high-level guest drivers without compromising competition integrity.

2. Season Drivers – Brand Logos

Full-season HOTPIT drivers may continue to display and represent any tire brand logos from other companies on their vehicles, apparel, and personal marketing materials. This allows drivers to:

- Maintain existing sponsor relationships
- Continue partner visibility
- Transition smoothly into the 2026 season

Although other brands logos are permitted in the **driver's assets (Vehicles, suits, etc..)**, rear competition tires must remain the official and approved **Zestino Acrova 07A (340) Tire**

Additional Notes:

To ensure fairness about **tire allocation quantities, pricing, and availability, Hotpit Autofest and Zestino Tires have come to the agreement for this model tire to be sold through HOTPIT Autofest. Hotpit Autofest and the Zestino tires distributor will co-manage stock allocation ensuring that all drivers have access to tires in a sizeable and timely manner.**

- Rear tire pricing, ordering, and availability details will be released soon

We will be further implementing a rear tire tech inspection (per round) which will include rear tire verification and marking.

- No alternate rear tire brands or sizes are permitted for full-season drivers during competition unless approved under the pro guest exception

Protest

- Protests are not allowed

5 Minute Timeout

- If you wish to call a 5-minute timeout it will cost \$50 cash immediately, that money will then be raffled off to the fans for the use of their time. The intent to call a timeout must be promptly communicated to the technical director and to race control by the team in order to avoid any confusion and to keep the show running smoothly. In order to request a 5 minute timeout, the team must notify the competition director in the pit area AND race control in the judging tower via the spotter or communication in the race control [Discord](#).

CODE OF CONDUCT

- Anyone competing in the series must strictly follow our Code of Conduct, which includes the drivers and their crew (Drivers are responsible for their crew at all times).
- Must maintain a professional image and attitude towards HOTPIT Autofest and staff

- Any driver/team found engaging in slander or defamation of ANYONE who represents HOTPIT Autofest including fellow drivers/teams will be fined and suspended from the series.
- If any physical or verbal threats are made to ANYONE who represents HOTPIT Autofest including drivers/teams, that person(s) will be fined and suspended indefinitely.

***HOTPIT Autofest Representation includes managing board, track staff, show staff, track management, and media.**

DRIVER PRIZE PAYOUT

Single Event

1st Place: \$5,000
2nd Place: \$3,000
3rd Place: \$1,000
4th Place: \$200
5th Place: \$200
6th Place: \$200
7th Place: \$200
8th Place: \$200

2026 Season Championship

1st Place: \$5,000
2nd Place: \$3,000
3rd Place: \$1,000

Sponsor Contingencies Checks:

Payable via Sponsor Credit. Per Event Checks Vary. Inquire with RJ after each event.

1st
2nd
3rd

HOT PIT AUTOFEST

- Rollcage
- Cutoff Switch
- Halo Seat
- Seatbelt
- Fire Safety 5lb extinguisher
- Roll Cage Padding
- All body panels present
- Working taillight at all times
- Presentable at the beginning of each race day
- Windshield must be crack free
- Fire Suit Minimum: 3.2A/5 Multi-layer Layer Minimum
- Helmet: Full Face SA2015 Minimum
- HANS Device are Required
- Shoes: SFI Racing Shoes
- Gloves: SFI Racing Gloves
- All Lug Nuts
- Drive Shaft loop
- No Leaking Fluids
- Battery Tied Down
- Car Must Start On Its Own
- Latches / Pins Secured
- Secured and Sealed Firewall

I have read and understand the Rules & Regulations and agree to follow them

Driver Name:

Car Number:

Driver's Signature:

Date:

HOTPIT Autofest Representative:

Date:
