



HOTPIT Autofest Autofest Tech, Rules and Regulations

Tech Rules

ALLOWED CHASSIS:

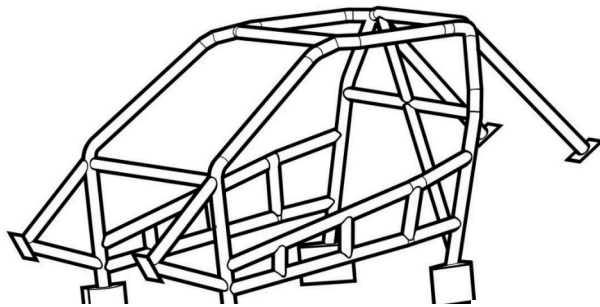
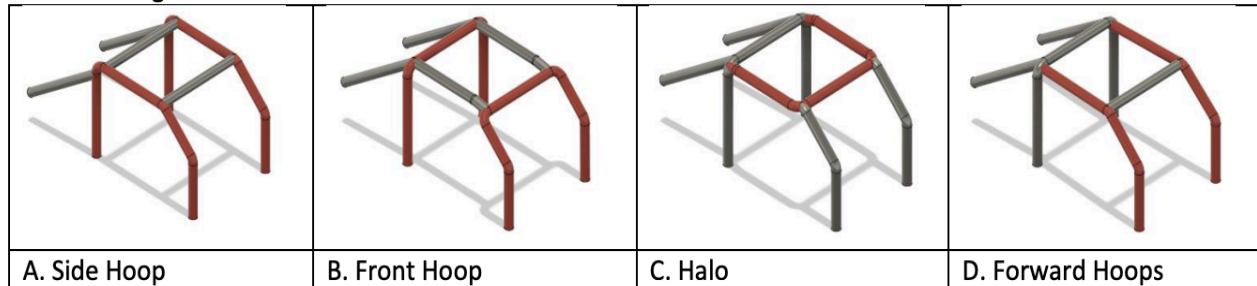
- Formula Drift - Pro Chassis: **Allowed**
- Formula Drift - ProSpec Chassis: **Allowed**
- Custom Tube Chassis: **Allowed under previous inspection 2400 lbs minimum**
- RHD >< LHD Converted Vehicles: **Allowed**
- AWD Vehicles: **Not Allowed**
- Exo Skeleton Death Karts: **Not Allowed**
- EV (Electric Vehicles): **Not Allowed**
- **Tire Size:** 265 Maximum width. (Based on sidewall tire print)
- **Treadwear:**
 - FRONT: **Open**
 - REAR: **300 Minimum** (Based on sidewall tire print)
- **Front Steering:** Angle Kit **Allowed** (open modification)
- **Rear:** Grip Kit **Allowed** (open modification)
- **Subframe:** Modified Pickups **Allowed**
- **Transmission:** Swap, Dogbox, Sequential **Allowed**

SAFETY

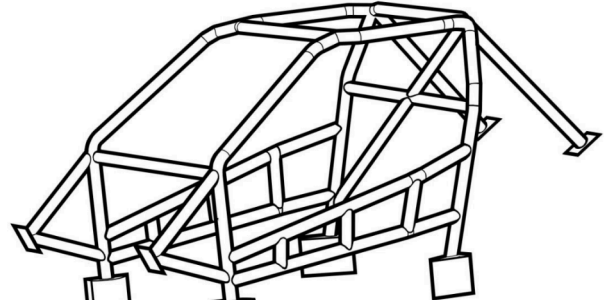
CHASSIS SAFETY:

Rollcage: 6 Point Welded Cage w/ Door Bars. 1.5-inch tube, .095 Wall Thickness DOM minimum. Anti-Wheel Intrusion Bars are HIGHLY recommended.

Several configurations are allowed:



RIGHT HAND DRIVE CONFIGURATION



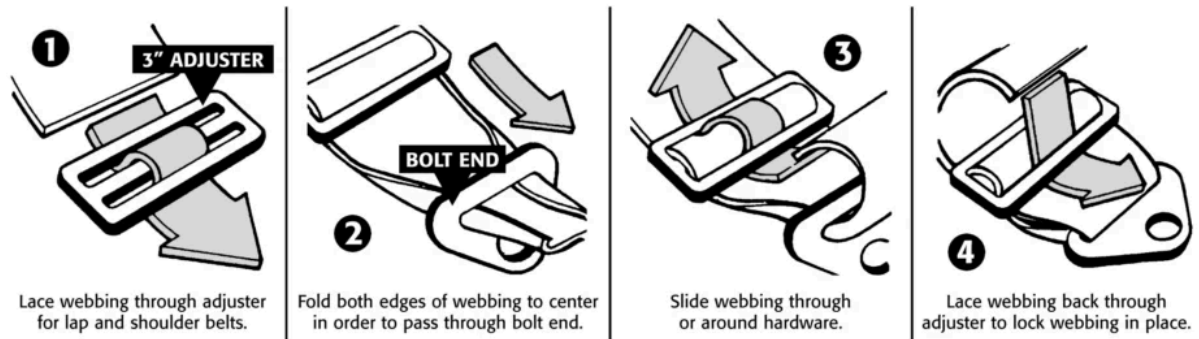
LEFT HAND DRIVE CONFIGURATION

Cutoff Switch:

- 1 Internal - at driver's reach on the A-pillar
- or
- 1 External - Twist killswitch, push button or pull cord on front driver side of chassis
- External switch must have Kill / Off Decal within 10" of unit

Seat: Fixed Back Bucket Seat (FIA/ SFI) - Out-of-Date is allowed. The seat must look clean with no visible tears. Must be securely fastened. Halo Seat required for 2026

Seatbelt: Minimum 5 Point Harness Properly Mounted. Minimum 10mm $\frac{3}{8}$ " mounting bolt size.



Fire Safety: 1x 5 lb Extinguisher Minimum Mounted Inside Car. Fire Suppression System recommended

Fuel: OEM Tank Allowed. Fuel Cell Allowed behind firewall. Fuel cell or stock tank located in the rear of the car must be protected. **Must have some a Roll over check valve**

Firewall: Fuel Cell, Rear Mount Radiators or any tanks that may hold any liquids need to be **BEHIND** a Firewall. Nitrous Bottle may remain in front of the firewall if desired. Firewall must be sealed and secured. No open holes in the firewall.

Roll Cage Padding: SFI padding must be present anywhere the driver's helmet can touch.

Transmission tunnel: Tunnel must be sealed. Modifications allowed given a minimum thickness of .036-inch steel or .050-inch aluminum / or equivalent securely attached to the chassis

Drive Shaft Loop: **Highly Recommended for 2025 and will be required for 2026**

Exterior:

- Vehicles **MUST** have all body panels present at the beginning of race day
- At the start of Top 32, all vehicles **MUST** be outfitted with all secured body parts
- Vehicles **MUST** have at least one working tail light and Brake Light at all times.
- Vehicles **MUST** be presentable at the beginning of each race day. Vehicles with multiple colored body panels unless otherwise designed as a Livery may require further approval
- Windshield **must** be crack free the day of. It may continue to race if it develops a crack within 10" of length.
- Vehicles **must** have functioning door handles on both interior and exterior or accessible from both
- All lug nuts **must** be present and torqued

Interior:

- Seat and Mounts **MUST** be rigid and securely mounted
- Seat belts **MUST** be installed the correct way
- Vehicle **MUST** have secured dash
- Vehicle **MUST** have kill switch within reach of driver
- Vehicle **MUST** have functioning door handles

***** EACH DRIVER MUST HAVE AT LEAST 1 x 10 lbs OR 2 x 5 lbs FIRE EXTINGUISHERS IN THEIR PIT AREA. FAILURE TO NOT EQUIP PIT AREA WITH FIRE EXTINGUISHER MAY RESULT IN A \$200 FINE.**

Driver:

DRIVING SUIT: One-piece driving suits are required and must be made of fire-resistant material and certified to SFI spec 3.2/A/5 or greater, or homologated to FIA 8856-2000, 8856-2018 specs, which effectively covers the body, including neck, ankles, and wrists. Multi-layer driving suits are recommended. Articles must be free of holes, tears or other openings except those made by the manufacturer of the equipment. Fire-resistant underwear is recommended. **All drivers and teams must carry a HOTPIT Autofest series Logo on the uppermost chest of the driver's suit and team uniform.** Other official series sponsor patches may be required. Contact the HOTPIT Autofest representative to obtain the digital file or patch.

Helmet: 1. Snell Memorial Foundation – SA2015, SA2020 2. SFI Foundation – Spec 31.2A 3. FIA 8860-2010, 8859-2015, 8860-2018 Full-faced helmets are required.

Neck Resistant: **A type of HANS Device is required for the 2025 season.**

Shoes: Shoes, are required and must be fire-resistant material and certified to SFI spec 3.3/5 or greater, or FIA 8856-2000, 8856-2018 specs

Gloves: Gloves are required and must be fire-resistant material and certified to SFI spec 3.3/5 or greater, or FIA 8856-2000, 8856-2018 specs

Underwear / Socks: Fire retardant underwear/socks are highly recommended

Head Sock: SFI Head Sock Required

ARM RESTRAINTS: Arm restraints are highly recommended

Thermal Protective Performance Chart

SFI Rating	TPP Value	Time to 2nd Degree Burn	Typical Use
3.2A/1	TPP 6	3 Seconds	Single-Layer Suit
3.2A/3	TPP 14	7 Seconds	Double-Layer Suit
3.2A/5	TPP 19	10 Seconds	Double-Layer Suit
3.2A/10	TPP 38	19 Seconds	Land Speed Records
3.2A/15	TPP 60	30 Seconds	Top Fuel/Alcohol
3.2A/20	TPP 80	40 Seconds	Top Fuel/Alcohol Funny Car

New rules added:

- Vehicles **must** have functioning door handles on both interior and exterior or accessible from both
- Vehicles **MUST** have at least one working tail light and Brake Light at all times.
- **Drive Shaft Loop:** Highly Recommended for 2025 and will be required for 2026
- **Fuel:** OEM Tank Allowed. Fuel Cell Allowed behind firewall. The fuel cell or stock tank located in the rear of the car must be protected. **Must have some a Rollover check valve**
- **Neck Resistant:** **A type of HANS Device is required for the 2025 season.**

Cutoff Switch:

- 1 Internal - at driver's reach on the A-pillar
- or
- 1 External - Twist killswitch, push button or pull cord on front driver side of chassis

QUALIFYING FORMAT 2025:

QUALIFYING FORMAT:

- Drivers will complete 1 qualifying run.

The top 24 drivers will be automatically seated for TOP 32.

The remaining 16 (25-40) drivers will battle for the remaining TOP 32 spots.

- If a driver scores a zero, they can still acquire points based on their run (for example, a driver can score a 90-point run and spin just before the finish line; This will give them 90 points on their zero, meaning they cannot do any better than a regular completed scored run. (Example score 90/0)

- If a driver is not ready for their qualifying lap, they will be deducted 10 points and allowed to qualify last.

QUALIFYING CRITERIA AND SCORING:

- Three Judges (Judges to change per round)

- Point System: (Subject to change per round)

- Line (30 pts)

- Angle (30 pts)

- Style (40 pts)

- DEDUCTIONS WILL BE MADE FOR THE FOLLOWING:

• Bobbles

• Wall taps

• Tire off course

• Missing zones and clips

• Straightening

• Off line

• Lack of Angle

QUALIFYING TIE BREAKER

In the event of a tie in qualifying, on Run One the following chart will be implemented.

-Tie Breaker 1 Style Score.

-Tie Breaker 2 Angle Score.

-Tie Breaker 3 Line Score.

-Tie Breaker 4 Previous round or season ranking.

INCOMPLETE QUALIFYING RUNS

If a driver makes any of the following mistakes in a qualifying run, the driver will not receive a score for that run therefore the run will be considered INCOMPLETE. Judges reserve the right to add additional INCOMPLETEs for specific tracks.

Topics to be discussed during the driver's meeting of that event:

- Spinning Out
- Opposite drift - Drifting with the opposite angle required at that point on the course.
- A mix of multiple mistakes that could be classified as an Unchaseable Lead.
- The number of tires off course that will receive an INCOMPLETE are specific to each track and will be discussed during the drivers meeting of that event.

Tandem Battles Rules

Tandems will follow traditional Tandem Criteria:

- **Decel Zones:** Areas mentioned in the drivers meeting to be a known Decel Area.
- **Contact:** The Chase driver is typically at fault for contacting the lead driver.
- **Tire De-bead:** In the event of a de-bead both drivers will be allowed to change their rear tires or re-inflate their tires.

-HOTPIT runs off of traditional rules of Lead vs.Chase except for hard Zeros. Mistakes will be accounted for by the judges and the winner will be selected based on who did the better job or the lesser of two evils.

-Exp 1: Lead Driver has a late initiation or short understeer, which would not be as bad as the Chase Driver spinning out or wrecking (DNF)

-Exp 2: Chase Driver has a late initiation, short understeer or a need to re-initiate is not as bad as the Lead Driver spinning out or going off course.

- In these 2 examples above, you would have traditionally had a forced OMT because of double zeros. We want to eliminate that, so judging these runs (mistakes) allows us to move forward with the competition.

Unchasable Lead:

-EXP: Bad or late initiation, going 3 or more tires off, spinning out, shutting down, multiple mistakes, hitting the wall. Judges will decide if the run was Unchaseable.

DEDUCTIONS WILL BE MADE FOR THE FOLLOWING:

- Bobbles
- Wall Taps
- Tire off-course
- Missing zones and clips
- Straightening
- Off Line
- Lack of Angle

Trackside Hot Pit is (MANDATORY for top 16)

- To keep the competition flowing smoothly, the Top 16 drivers will be required to have to set up their hot pits trackside.
- All 5-minute calls will be taken in the trackside Hot Pit area during the Top 16

Tire Warm Up

- If the driver is not to the line in 30 seconds, mandatory red flag and loss of lap (applied during practice only)
- The time limit is based on the time when both drivers enter the track

Allowed Tire Rules

- Drivers are allowed to run any tire in the 265 max width (sidewall rating), 300tw min spec
- **2025 Active Tire Brands:**
- Drivers running a non-active brand tire are **NOT** permitted to **brand or promote** said tire (logos on car). You are allowed to run a non-active tire brand within our rules and specs as long as there is not any branding as mentioned above (logos on car).
- Drivers who want to run & promote a **Non-Active Tire Brand** must notify Jeff@HOTPITAutofest.com before the event to get approval/information.
- The cost to promote a Non-Active tire brand is \$500 per event, payable by either the "Tire Company" (preferred) or collective driver(s). This is to unlock the branding of a non-active tire brand within our series.

Protest

- Protests are not allowed

5 Minute Timeout

- If you wish to call a 5-minute timeout it will cost \$50 cash immediately, that money will then be raffled off to the fans for the use of their time.

CODE OF CONDUCT

- Anyone competing in the series must strictly follow our Code of Conduct, which includes the drivers and their crew (Drivers are responsible for their crew at all times).
- Must maintain a professional image and attitude towards HOTPIT Autofest and staff
- Any driver/team found engaging in slander or defamation of ANYONE who represents HOTPIT Autofest including fellow drivers/teams will be fined and suspended from the series.
- If any physical or verbal threats are made to ANYONE who represents HOTPIT Autofest including drivers/teams, that person(s) will be fined and suspended indefinitely.

***HOTPIT Autofest Representation includes managing board, track staff, show staff, track management, and media.**

DRIVER PRIZE PAYOUT

Single Event

1st Place: \$5,000
2nd Place: \$3,000
3rd Place: \$1,000
4th Place: \$200
5th Place: \$200
6th Place: \$200
7th Place: \$200
8th Place: \$200

2025 Season Championship

1st Place: \$5,000
2nd Place: \$3,000
3rd Place: \$1,000

Sponsor Contingencies Checks:

Payable via Sponsor Credit. Per Event Checks Vary. Inquire with RJ after each event.

1st
2nd
3rd

HOT PIT AUTOFEST

- Rollcage
- Cutoff Switch
- Seat
- Seatbelt
- Fire Safety
- Roll Cage Padding
- All body panels present
- Working tail light at all times
- Presentable at the beginning of each race day
- Windshield must be crack free
- Fire Suit Minimum: 3.2A/5 Multi-layer Layer Minimum
- Helmet: Full Face SA2015 Minimum
- HANS Device are Required**
- Shoes: SFI Racing Shoes
- Gloves: SFI Racing Gloves
- Head Sock: SFI Head Sock Required
- All Lug Nuts
- No Leaking Fluids
- Battery Tied Down
- Car Must Start On Its Own
- Latches / Pins Secured
- Secured and Sealed Firewall
- I have read and understand the Rules & Regulations and agree to follow them**

Driver Name:

Car Number:

Drivers Signature:

Date:

HOTPIT Autofest Representative:

Date: