



## Hot Pit Autofest 2023 Season Tech, Rules and Regulations.

### Tech Rules

#### ALLOWED CHASSIS:

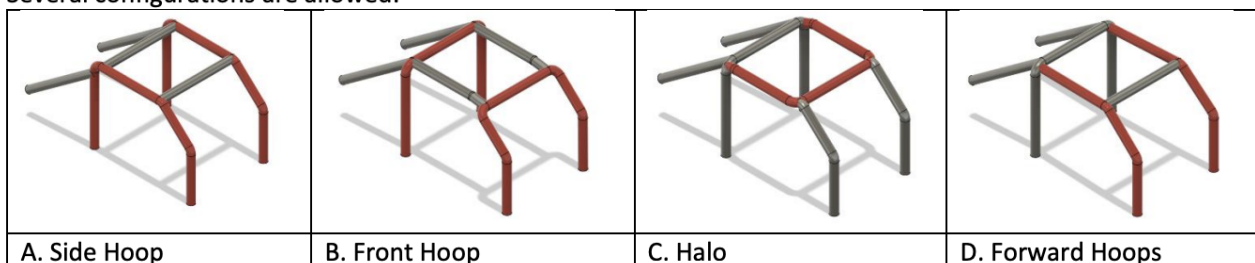
- 2023 Formula Drift - Pro Chassis: **Allowed**
- 2023 Formula Drift - Pro AM Feder Series Chassis: **Allowed**
- Custom Tube Chassis: **Allowed under previous inspection 2800 lbs minimum**
- RHD >< LHD Converted Vehicles: **Allowed**
- AWD Vehicles: **Not Allowed**
- Exo Skeleton Death Karts: **Not Allowed**

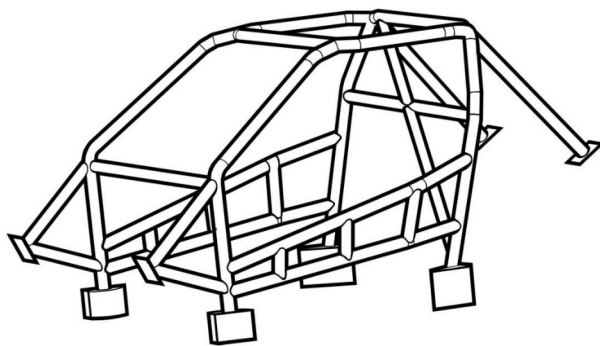
### SAFETY

#### Chassis:

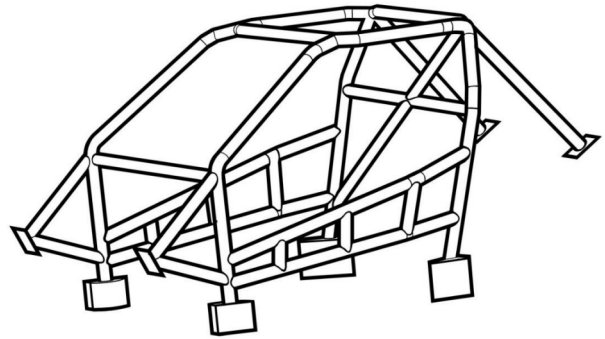
**Rollcage:** 6 Point Welded Cage w/ Door bars. 1.5 inch tube, .095 Wall Thickness DOM minimum. Anti wheel intrusion bars HIGHLY recommended.

Several configurations are allowed:





RIGHT HAND DRIVE CONFIGURATION



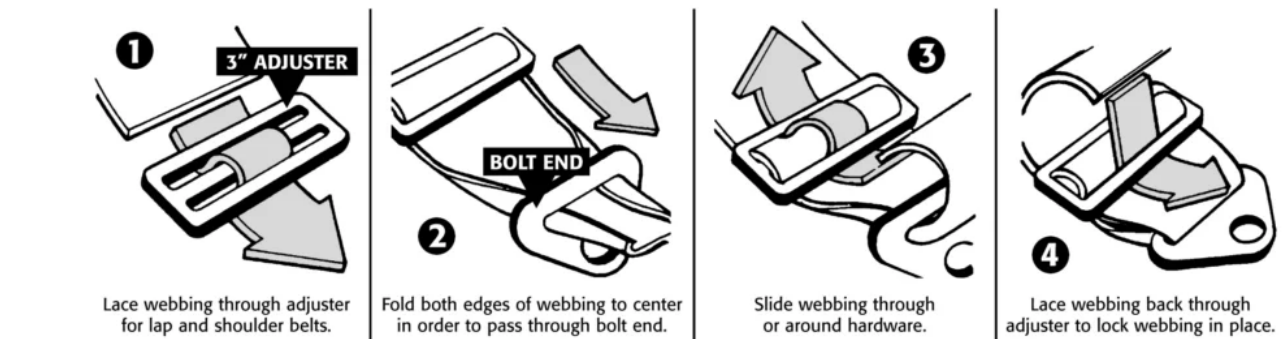
LEFT HAND DRIVE CONFIGURATION

### Cutoff switch:

- 1 Internal - at drivers reach
- 1 external - Twist killswitch, push button or pull cord on front drivers side of chassis.
- External switch must have Kill / Off Decal within 10" of unit

**Seat:** Fixed Back Bucket Seat (FIA/ SFI) - Out of date is allowed if it's within 10 years of manufacturing.

**Seatbelt:** Minimum 4 Point Harness Properly Mounted\*\*



**Fire Safety:** 1x 5 lb Extinguisher Minimum Mounted Inside Car. Fire suppression system recommended

**Fuel:** OEM Tank Allowed. Fuel Cell Allowed behind firewall. Fuel cell or stock tank located in the rear of the car, must be protected.

**Firewall:** Fuel Cell, Rear Mount Radiators or any tanks which may hold any liquids need to be **BEHIND** a Firewall. Nitrous Bottle may remain in front of the firewall if desired. Firewall must be sealed and secured. No open holes in the firewall.

**Roll Cage Padding:** SFI padding must be present anywhere the driver's helmet can touch.

**Exterior:**

- Vehicles **MUST** have all body panels present at the beginning of race day.
- Vehicles may do practice runs without hood, trunk, or bumpers.
- At the start of Top 32, all vehicles **MUST** be outfitted with all secured body parts.
- Vehicles **MUST** have at least 1 working tail light at all times.
- Vehicles **MUST** be presentable at the beginning of each race day. Vehicles with multiple colored body panels unless otherwise designed as a Livery may require further approval the day of.
- Windshield must be crack free the day of. It may continue to race if it develops a crack within 10" of length.

**Interior:**

- Seat and Mounts **MUST** be rigid and securely mounted.
- Seat belts **MUST** be installed the correct way.
- Vehicle **MUST** have secured dash
- Vehicle **MUST** have kill switch within reach of driver

**Driver:**

**Fire Suit MUST** be worn at all times while driving, no exceptions.

- Minimum: 3.2A/1 Single Layer Minimum
- 2 piece suits allowed when wearing fire retardant underwear.
- Cordura Suits: **NOT ALLOWED**

**Helmet:** Full Face SA2015 Minimum

**Neck Collars:** HANS Device are HIGHLY recommended

**Shoes:** SFI Racing Shoes

**Gloves:** SFI Racing Gloves

**Underwear / Socks:** 3.2A/5 above worn suits and shoes may not wear fire retardant underwear. Nomex, SFI-1 or 3.2A/1 equipment must wear fire retardant underwear.

**Head Sock:** SFI Head Sock Required

## Thermal Protective Performance Chart

SFI Rating	TPP Value	Time to 2nd Degree Burn	Typical Use
3.2A/1	TPP 6	3 Seconds	Single-Layer Suit
3.2A/3	TPP 14	7 Seconds	Double-Layer Suit
3.2A/5	TPP 19	10 Seconds	Double-Layer Suit
3.2A/10	TPP 38	19 Seconds	Land Speed Records
3.2A/15	TPP 60	30 Seconds	Top Fuel/Alcohol
3.2A/20	TPP 80	40 Seconds	Top Fuel/Alcohol Funny Car

**\*\*\* EACH DRIVER MUST HAVE AT LEAST 1X 10 lbs OR 2x 5 lbs FIRE EXTINGUISHERS IN THEIR PIT AREA. FAILURE TO NOT EQUIP PIT AREA WITH FIRE EXTINGUISHER MAY RESULT IN FINE.**

## COMPETITION FORMAT

### COMPETITION GUIDELINES:

- **Tire:** 265 Maximum width.
- **Treadwear**
  - FRONT: **Open**
  - REAR: **300 Minimum**
- **Front Steering:** Wide Angle Kit Allowed
- **Rear:** Grip Kit: Allowed
- **Subframe:** Modified pick ups Allowed
- **Transmission:** Swap, Dogbox, Sequential: Allowed
- **EV (Electric Vehicles):** Not Allowed

### **QUALIFYING FORMAT:**

- Drivers will complete 1 qualifying run.
- Top 24 drivers will be automatically seated for TOP 32.
- Remaining 16 (25-40) drivers will battle for the remaining TOP 32 spots.
- If a driver scores a zero, they can still acquire points based off of their run (for example, a driver can score a 90 point run and spin just before the finish line; This will give them 90 points on their zero, meaning they cannot do any better than a regular completed scored run. (Example score 90/0)
- If a driver is not ready for their qualifying lap, they will be deducted 10 points and allowed to qualify last.

### **QUALIFYING CRITERIA AND SCORING:**

- **Three Judges** (Judges to change per round)
- **Point System:** (Subject to change per round)
  - Line (30 pts)
  - Angle (30 pts)
  - Style (40 pts)
- **DEDUCTIONS WILL BE MADE FOR THE FOLLOWING:**
  - Bobbles
  - Wall taps
  - Tire off course
  - Missing zones and clips
  - Straightening
  - Off line
  - Lack of Angle

### **QUALIFYING TIE BREAKER**

**In the event of a tie in qualifying, on Run One the following chart will be implemented.**

- Tie Breaker 1 Style Score.
- Tie Breaker 2 Angle Score.
- Tie Breaker 3 Line Score.
- Tie Breaker 4 Previous round or season ranking.

### **INCOMPLETE QUALIFYING RUNS**

If a driver makes any of the following mistakes in a qualifying run, the driver will not receive a score for that run therefore the run will be considered INCOMPLETE. Judges reserve the right to add additional INCOMPLETEs for specific tracks.

**Topics to be discussed during the drivers meeting of that event:**

- Spinning Out
- Opposite drift - Drifting with the opposite angle required at that point on course.
- A mix of multiple mistakes that could be classified as an Unchaseable Lead.
- The number of tires off course that will receive an INCOMPLETE are specific to each track will be discussed during the drivers meeting of that event.

**Tandem Requirements:**

**Tandems will follow traditional tandem criteria:**

- **Decel Zones:** areas mentioned in the drivers meeting to be a known decel area.
- **Contact:** Chase driver typically at fault for contacting the lead driver.
- **Tire Debead:** In the event of a de-bead both drivers will be allowed to change their rear tires or re-inflate their tires.

**Track Pit Stalls (MANDATORY)**

- To keep the competition flowing smoothly, Top 16 drivers will have to set up Track Stalls on the available stalls placed on the entry-side of the track.
- All 5 minute calls will be taken in the stall area during the top 16
- In the event that a car gets towed off the track, cars can work off their allocated trailer space.

**Tire warm up**

- If driver is not to the line in 30 seconds, mandatory red flag and loss of lap (applied during practice only)
- Time limit is based upon the time when both drivers are entering the track

**Allowed Tire Rules**

- Drivers are allowed to run any tire in the 265 max width (sidewall rating), 300tw min spec
- Drivers running a non active brand tire are **NOT** permitted to brand or promote said tire (ex. logos on car, flags in pit, logos on shirts or hats)

**Protest**

- If you wish to protest any call it will cost \$50 cash immediately, that money will then be raffled off to the fans for use of their time

**5 Minute Timeout**

- If you wish to call a 5 minute timeout it will cost \$50 cash immediately, that money will then be raffled off to the fans for use of their time
- 5 minute calls will be implemented within the top 16 only

## **CODE OF CONDUCT**

- Anyone competing in the series must strictly follow our code of conduct, this includes the drivers and their crew (Drivers are responsible for their crew at all times)
- Must maintain a professional image and attitude towards the sanctioned body and the sanctioned staff
- Any person who is found engaging in slander or defamation of ANYONE who directly represents \*Hot Pit Autofest will be fined and possibly suspended from the series
- If any physical or verbal threats are made to ANYONE who directly represents \*Hot Pit Autofest, that person(s) will be fined and suspended indefinitely until further review by Hot Pit Autofest staff

**\*Hot Pit Autofest Presentation includes managing board, track staff, show staff & track management.**

# HOT PIT AUTOFEST

- ☐ Rollcage
- ☐ Cutoff switch
- ☐ Seat
- ☐ Seatbelt
- ☐ Fire Safety
- ☐ Fuel
- ☐ Roll Cage Padding
- ☐ All body panels present
- ☐ Working tail light at all times
- ☐ Presentable at the beginning of each race day
- ☐ Windshield must be crack free
- ☐ Fire Suit Minimum: 3.2A/1 Single Layer Minimum
- ☐ Helmet: Full Face SA2015 Minimum
- ☐ Neck Collars: HANS Device are HIGHLY recommended
- ☐ Shoes: SFI Racing Shoes
- ☐ Gloves: SFI Racing Gloves
- ☐ Underwear / Socks: 3.2A/5 above worn suits and shoes may not wear fire retardant underwear. Nomex, SFI-1 or 3.2A/1 equipment must wear fire retardant underwear.
- ☐ Head Sock: SFI Head Sock Required
- ☐ Lug Nuts
- ☐ No Leaking Fluids
- ☐ Battery Tied Down
- ☐ Car Must Start On Its Own
- ☐ Latches / Pins Secured
- ☐ Secured and Sealed Firewall

Drivers Signature:

Date:

Hot Pit Representative:

Date: